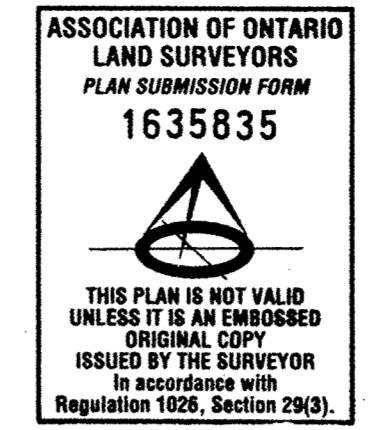


IMPERIAL  
 DISTANCES ON THIS PLAN  
 ARE IN FEET AND  
 CAN BE CONVERTED TO METRES  
 BY MULTIPLYING BY 0.3048



SURVEYOR'S REAL PROPERTY REPORT  
 PART I  
 PLAN SHOWING  
 ISLAND 376A IN GEORGIAN BAY  
 IN FRONT OF THE GEOGRAPHIC TOWNSHIP OF SHAWANAGA  
 NOW IN THE  
**TOWNSHIP OF THE ARCHIPELAGO**  
 DISTRICT OF PARRY SOUND  
 SCALE 1 INCH = 50 FEET  
 PAUL F. FORTH O. L. S.

MEASUREMENTS TO WATER'S EDGE		
STATION	AZIMUTH	DISTANCE
A 119° 03'	269.2'	
A 118° 48'	270.6'	
A 113° 15'	285.5'	
A 105° 04'	294.4'	
A 96° 52'	277.9'	
A 82° 23'	263.0'	
A 83° 40'	231.7'	
A 83° 45'	214.6'	
A 81° 06'	211.0'	
A 79° 14'	208.6'	
A 75° 18'	198.3'	
A 66° 30'	196.3'	
A 59° 19'	176.4'	
A 48° 41'	185.0'	
A 41° 21'	187.1'	
A 36° 11'	193.3'	
A 39° 44'	220.5'	
A 34° 03'	246.2'	
A 29° 45'	239.1'	
A 25° 55'	249.9'	
A 17° 55'	243.1'	
A 5° 11'	225.2'	
A 352° 58'	253.6'	
A 336° 20'	275.8'	
A 335° 49'	278.8'	
A 331° 20'	288.8'	
A 328° 51'	336.4'	
A 328° 08'	349.0'	
A 326° 23'	360.1'	
A 329° 04'	363.6'	
A 330° 56'	382.7'	
A 310° 15'	440.8'	
A 328° 41'	465.1'	
A 301° 43'	476.4'	
A 322° 20'	508.7'	
A 324° 22'	527.3'	
A 328° 18'	545.6'	
A 328° 47'	572.7'	

MEASUREMENTS TO HIGH WATER MARK ACCORDING TO TOWNSHIP OF THE ARCHIPELAGO ZONING BY-LAW (CONTOUR OF ELEVATION 578.8' G.S.C.)		
STATION	AZIMUTH	DISTANCE
A 327° 51'	565.0'	
A 326° 32'	538.8'	
A 327° 15'	503.0'	
A 326° 15'	480.7'	
A 330° 23'	462.2'	
A 326° 18'	421.2'	
A 331° 31'	375.7'	
A 325° 07'	359.9'	
A 327° 08'	359.5'	
A 328° 37'	333.4'	
A 325° 41'	300.2'	
A 331° 57'	294.1'	
A 335° 30'	285.3'	
A 338° 46'	283.7'	
A 341° 07'	277.6'	
A 341° 07'	258.0'	
A 355° 17'	258.0'	
A 3° 18'	248.1'	
A 18° 29'	241.1'	
A 32° 58'	258.0'	
A 34° 52'	271.9'	
A 37° 52'	270.2'	
A 36° 58'	253.9'	
A 40° 05'	232.1'	
A 50° 46'	234.4'	
A 59° 46'	234.4'	
A 57° 46'	218.5'	
A 64° 55'	213.0'	
A 69° 54'	208.5'	
A 80° 45'	235.5'	
A 83° 12'	273.3'	
A 91° 05'	279.8'	
A 93° 25'	294.1'	
A 92° 44'	324.2'	
A 94° 17'	340.4'	
A 98° 05'	352.3'	
A 93° 02'	450.5'	
A 91° 54'	483.8'	
A 91° 23'	435.8'	
A 91° 23'	415.4'	
A 92° 58'	364.7'	
A 94° 09'	340.7'	
A 93° 23'	324.7'	
A 93° 23'	324.7'	
A 95° 51'	289.2'	
A 100° 07'	290.1'	
A 103° 40'	292.7'	
A 114° 48'	293.0'	

MEASUREMENTS TO LINE OF LAST RETREAT OF RECEDING WATER'S EDGE		
STATION	AZIMUTH	DISTANCE
B 241° 56'	292.5'	
B 239° 18'	286.4'	
B 234° 00'	232.3'	
B 231° 47'	207.5'	
B 232° 39'	196.9'	
B 231° 27'	154.2'	
B 232° 52'	150.1'	
B 232° 18'	177.1'	
B 243° 43'	182.8'	
B 242° 20'	173.4'	
B 238° 47'	153.1'	
B 238° 09'	147.1'	
B 244° 03'	143.2'	
B 244° 01'	143.3'	
B 245° 55'	131.9'	
B 233° 37'	122.0'	
B 236° 18'	121.9'	
B 139° 18'	21.9'	
B 124° 17'	77.7'	
B 88° 11'	89.0'	
B 81° 21'	89.0'	
B 87° 32'	104.1'	
B 53° 39'	104.1'	
B 24° 21'	98.2'	
B 20° 51'	103.0'	
B 30° 42'	103.0'	
B 27° 00'	148.4'	
B 51° 17'	155.4'	

MEASUREMENTS TO HIGH WATER MARK ACCORDING TO TOWNSHIP OF THE ARCHIPELAGO ZONING BY-LAW (CONTOUR OF ELEVATION 578.8' G.S.C.)		
STATION	AZIMUTH	DISTANCE
B 89° 09'	324.4'	
B 71° 02'	322.3'	
B 73° 25'	254.5'	
B 71° 02'	231.9'	
B 68° 02'	230.4'	
B 66° 43'	213.8'	
B 66° 33'	200.3'	
B 61° 51'	191.2'	
B 63° 06'	183.1'	
B 87° 23'	174.8'	
B 85° 12'	188.7'	
B 59° 21'	174.8'	
B 59° 41'	153.2'	
B 54° 01'	147.5'	
B 51° 24'	159.9'	
B 42° 33'	181.2'	
B 35° 29'	181.2'	
B 27° 14'	180.1'	
B 23° 46'	186.1'	
B 18° 29'	187.9'	
B 21° 56'	150.2'	
B 23° 03'	138.1'	
B 25° 51'	135.9'	
B 18° 57'	110.1'	
B 5° 45'	100.4'	
B 2° 17'	84.1'	
B 355° 36'	75.8'	
B 0° 58'	51.0'	
B 15° 52'	47.1'	
B 50° 29'	90.2'	
B 76° 28'	86.3'	
B 71° 87'	37.1'	
B 102° 07'	64.2'	
B 108° 28'	43.7'	
B 129° 47'	17.5'	
B 229° 48'	37.0'	
B 238° 24'	70.2'	
B 247° 53'	105.8'	
B 245° 37'	149.4'	
B 242° 51'	173.9'	
B 246° 28'	213.0'	
B 241° 89'	192.4'	
B 239° 50'	192.0'	
B 232° 21'	195.5'	
B 233° 04'	192.4'	
B 231° 89'	208.0'	
B 234° 14'	232.8'	
B 236° 11'	256.9'	
B 241° 14'	276.3'	
B 244° 05'	282.2'	

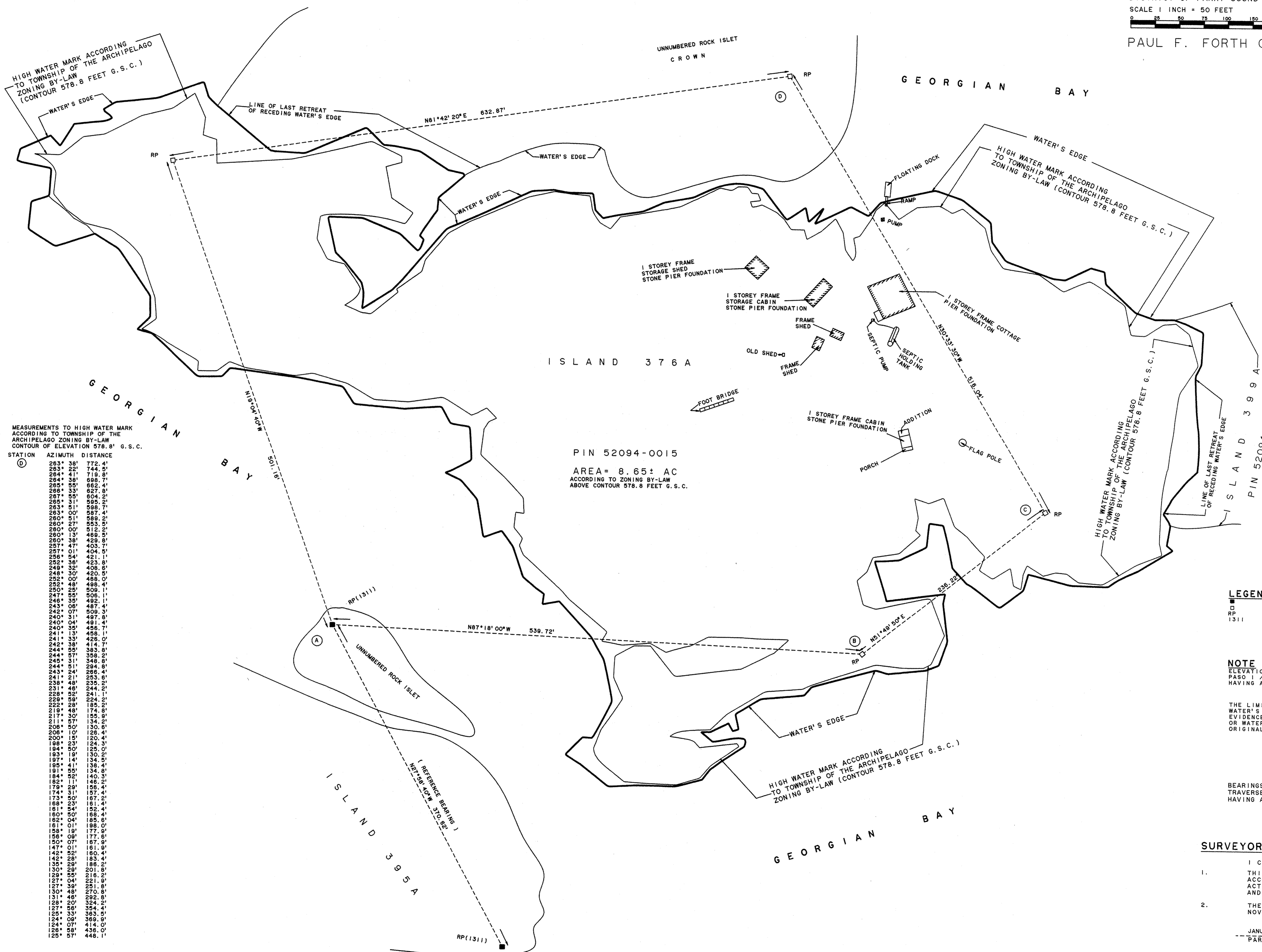
MEASUREMENTS TO LINE OF LAST RETREAT OF RECEDING WATER'S EDGE		
STATION	AZIMUTH	DISTANCE
C 123° 22'	447.1'	
C 123° 01'	385.0'	
C 121° 38'	377.7'	
C 122° 8'	364.4'	
C 126° 20'	349.1'	
C 127° 00'	338.8'	
C 130° 24'	289.6'	
C 129° 08'	286.8'	
C 125° 40'	283.9'	
C 125° 14'	216.2'	
C 127° 18'	182.9'	
C 139° 50'	184.4'	
C 144° 09'	158.3'	
C 150° 18'	182.9'	
C 154° 47'	147.8'	
C 170° 46'	152.7'	
C 185° 29'	139.2'	
C 172° 35'	150.0'	
C 172° 18'	150.0'	
C 181° 05'	147.0'	
C 182° 40'	118.8'	
C 206° 22'	128.0'	
C 217° 38'	158.9'	
C 224° 11'	81.2'	
C 226° 58'	204.0'	
C 230° 25'	11.1'	
C 232° 08'	239.6'	
C 234° 24'	241.1'	
C 238° 42'	333.8'	
C 241° 51'	255.9'	
C 243° 43'	256.8'	
C 245° 31'	287.8'	
C 245° 48'	350.9'	
C 245° 28'	382.9'	
C 241° 43'	446.8'	
C 241° 08'	480.7'	
C 240° 58'	486.8'	
C 243° 43'	484.8'	
C 248° 10'	496.9'	
C 252° 30'	491.8'	
C 251° 03'	456.8'	
C 247° 25'	428.9'	
C 244° 49'	419.9'	
C 245° 19'	409.2'	
C 248° 02'	410.7'	
C 246° 38'	384.4'	
C 250° 22'	378.8'	
C 252° 30'	346.7'	

MEASUREMENTS TO LINE OF LAST RETREAT OF RECEDING WATER'S EDGE		
STATION	AZIMUTH	DISTANCE
C 252° 30'	346.7'	
C 252° 45'	346.7'	
C 254° 23'	380.2'	
C 258° 03'	383.9'	
C 259° 52'	419.3'	
C 282° 37'	433.5'	
C 261° 34'	462.0'	
C 260° 34'	500.0'	
C 261° 07'	528.2'	
C 261° 22'	533.3'	
C 266° 34'	582.3'	

MEASUREMENTS TO WATER'S EDGE		
STATION	AZIMUTH	DISTANCE
D 267° 22'	561.5'	
D 268° 46'	595.4'	
D 267° 28'	641.7'	
D 267° 23'	684.0'	
D 266° 52'	697.2'	
D 268° 01'	689.8'	
D 265° 40'	728.8'	
D 264° 02'	744.9'	
D 264° 37'	754.0'	
D 263° 59'	785.2'	
D 260° 04'	760.9'	
D 258° 18'	741.8'	
D 258° 53'	684.8'	



**PART 2**  
 THIS PLAN MUST BE READ IN  
 CONJUNCTION WITH SURVEYOR'S REAL  
 PROPERTY REPORT DATED  
 JANUARY 11, 2007

THIS REPORT WAS PREPARED FOR  
**JEREMY CHARLES ROGERS McINTOSH**  
 AND HIS ASSIGNS  
 AND THE UNDERSIGNED ACCEPTS NO  
 RESPONSIBILITY FOR USE BY  
 OTHER PARTIES

**SITE BENCH MARK**  
 LOCATED ON TOP OF ROCK POST  
 AT STATION (C) MARKED HEREON  
 HAVING AN ELEVATION  
 OF 581.63 FEET G.S.C.

**LEGEND**

□	DENOTES	FOUND SURVEY MONUMENT
○	"	PLANTED SURVEY MONUMENT
●	"	ROCK POST
1311	"	PAUL F. FORTH OLS

**NOTE**  
 ELEVATIONS ARE REFERRED TO GEODETIC BENCH MARK  
 PASO 1 / 1890 (CODE 513)  
 HAVING AN ELEVATION OF 583.71 FEET G.S.C.

THE LIMIT OF GEORGIAN BAY AS SHOWN HEREON AS  
 WATER'S EDGE IS THE BEST AVAILABLE  
 EVIDENCE OF THE ORIGINAL HIGH WATER MARK  
 OR WATER'S EDGE AS IT EXISTED AT THE TIME OF THE  
 ORIGINAL SURVEY OF 376A

BEARINGS ARE ASTRONOMIC AND ARE REFERRED TO THE  
 TRAVERSE COURSE (A) TO (E) SHOWN ON PLAN 42R-12376  
 HAVING A BEARING OF N 27°58' 40\"/>

**SURVEYOR'S CERTIFICATE**

I CERTIFY THAT:

- THIS SURVEY AND PLAN ARE CORRECT AND IN ACCORDANCE WITH THE SURVEYORS ACT, THE LAND TITLES ACT AND THE REGULATIONS MADE UNDER THEM
- THE SURVEY WAS COMPLETED ON THE 24th DAY OF NOVEMBER, 2006

JANUARY 11, 2007  
 PARRY SOUND, ONTARIO  
 PAUL F. FORTH  
 ONTARIO LAND SURVEYOR